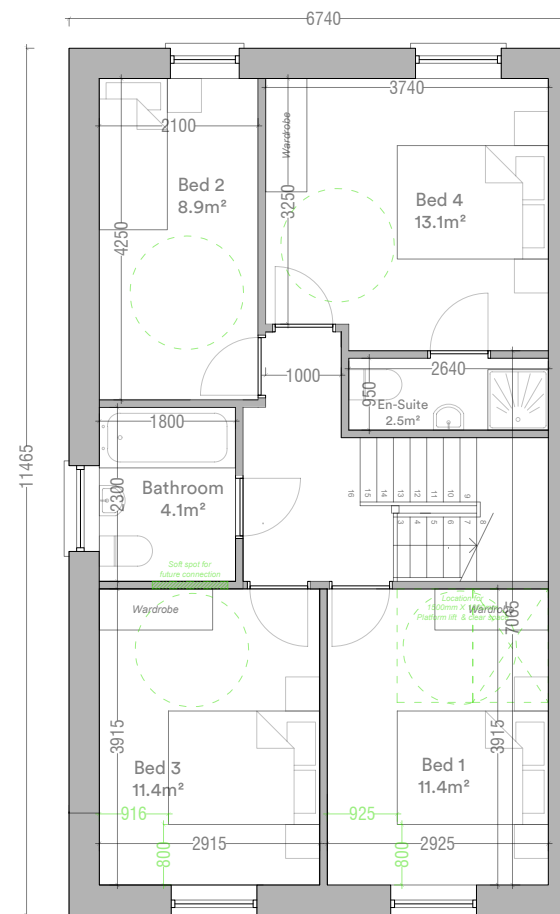
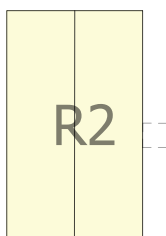


House Type R2  
Ground Floor Plan  
63.3m<sup>2</sup>



House Type R2  
First Floor Plan  
63.3m<sup>2</sup>



House Type R2  
4 Bed / 7 Person

Detached

Total Floor Area	126.6m <sup>2</sup>	(110m <sup>2</sup> )
Ground Floor Area	63.3m <sup>2</sup>	
First Floor Area	63.3m <sup>2</sup>	
Total Living Area	45.6m <sup>2</sup>	(40m <sup>2</sup> )
Total Bedroom Area	45m <sup>2</sup>	(43m <sup>2</sup> )
Total Storage Area	8m <sup>2</sup> *	(6m <sup>2</sup> )

Minimum standards shown in parentheses  
Refer to site layout for handing and orientation  
\*Includes 3.5m<sup>2</sup> of attic storage

Storage Area